

Smarter.

Cleaner.



Greener.

Innovative Car Wash Solutions for Automobile Dealerships



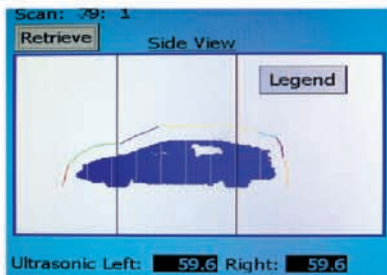
Smarter. Cleaner. Greener.



So incredibly smart,

It's innovative. It's cutting edge technology. It's simple.

It's the **IQ Car Wash System** from D&S Car Wash Equipment Company. A system so advanced, it simplifies your detail department's workday while putting smiles on customer faces with its consistently high-quality washes. And customer smiles translate into higher CSI ratings!



It's friendly. The IQ System ensures a high-quality wash for every vehicle every time with its innovative 3D vehicle mapping and profiling technology.

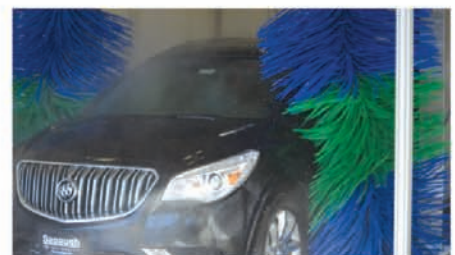
And that's not all. Not only does IQ deliver the cleanest, most reliable car wash in the industry today, its advanced technology doesn't even need an attendant to do its job right every time – all the way down to the

state-of-the-art Wheel Cannon blaster that effectively cleans all sizes and shapes of wheels and tires.

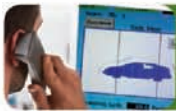
No worries – ever. If a technical issue should occur, the IQ system automatically sends an alert to your smartphone or email account – *and to your distributor as well!* – to quickly resolve the problem and maximize uptime.

Bottom line savings. Choose the IQ Soft-Touch or the IQ Touch-Free Car Wash. Either way you're getting a feature-rich car wash system that delivers more bang for your buck every time you use it.

Seeing is believing. For a full demonstration of all the innovative features of the IQ Car Wash System, call D&S today at 800.844.3442!



it's simply the best.



Smarter.

Interactive Operating System Design

- Scans each vehicle's size and shape using 3D mapping to know what it's cleaning
- Customizes and optimizes wash for any vehicle
- Tracks location of vehicle in bay using invisible treadle and vehicle positioning system
- Uses easy, interactive touchscreen technology to configure, customize, control, operate, and troubleshoot system
- Sends reports to system administrator when it detects system trouble

"The IQ provides a fast, quality wash that's easy for the guys in our Detail Department to use. It also saves me time and money with its troubleshooting notification."

*Eric Roberts
Director of Car Wash Operations
Jackson Family of Dealerships
Sullivan IL*



Cleaner.

Reliable & Consistent Performance

- 3D mapping for accurate and optimal washing
- Strategically placed closed-cell foam brushes on the IQ Soft Touch and high-impact nozzles on the IQ Touch-Free
- Pre-soak for every vehicle
- Scrubs front and rear of each vehicle with all 3 brushes spinning both directions
- Brushes gently hug vehicle for consistent, overall safe contact
- Cleans up to 20" rims with targeted wheel cleaner and tire cannon

"We wash every customer's car – new, pre-owned, and service. With IQ, our Appearance Department is never down. IQ was the car wash we needed."

*Dennis Johnson
Appearance Center Manager
Alderson Auto Group
Lubbock TX*



Greener.

Eco-Friendly Operation

- Reduces water consumption
- Reduces chemical consumption
- Reduces effluent for lower sewer costs
- Reduces power consumption
- Installs simply and efficiently
- Reduces noise with whisper quiet washing
- Simplifies permitting process
- Both IQ models share 90% of the same components for fewer spare parts requirements
- Wash functions are precisely controlled

"We don't know how we managed without this car wash. It makes our lives a lot easier. We wash everyone's car, and we're able to handle more sold units in a timely fashion."

*John H. Londoff Jr.
President/Owner
Johnny Londoff Chevrolet, Inc.
St. Louis MO*

Leasing & Financing Options Available – Call 800.844.3442 To Learn More

Physical Features

- Soft-Touch or Touch-Free technology
- Stainless steel and lightweight aluminum construction
- Invisible Treadle™ for clean, "open" bay appearance
- Wheel Cannon with chemical applicator
- Electric motors with VFD control
- Ultra-compact pump stands
- Color touchscreen interface
- 7'6" high vehicle clearance
- "Plug & Play" installation
- Scalable to every bay

Standard Dealer Wash Packages

- Pre-soak
- Wheel Cannon & chemical applicator
- Spot free rinse
- Rain curtain rinse

Available Options

- Off board undercarriage
- Detergent 1 & 2
- Tri gloss foam
- Bug-off applicator (floor mounted)
- Quick rain
- Dryer



Specifications

Dimensions

Vehicle Height (max)	7'6" (90")
Vehicle Width (max)	110"
Carriage Width	144"
Carriage Height	110"
Carriage Weight	750 lb
Chemical Pump Stand	24"w x 32"d x 53"h (both)
High Pressure Pump Stand	32"w x 35"d x 63"h (IQ Touch Free only)

Building Requirements

Overhead Rails	32' (standard length)
Bay Height (min)	10' (IQ Soft Touch) or 9' (IQ Touch Free)
Bay Width (min)	14'
Bay Length (min)	*35' (IQ Soft Touch) or *30' (IQ Touch Free)
Bay Length with Dryers	Add 3' to 5' (per dryer manufacturer)

Bays may be shorter, but may sacrifice washability on longer vehicles

*Minimum for 22' vehicles

Electrical & Service Requirements

208-230 V / 60 Hz / 3 PH	
Carriage	20 A
Chemical Pump	10 A
High Pressure Pump	20 A (IQ Soft Touch) or 60 A (IQ Touch Free)
Carriage Weight	750 lb
Air Compressor	20 A
110 V / 60 Hz / 1 PH	
Control Power/Lights	10 A

Air Requirements

5 cfm @ 90 psi	Filtered dry air for chemical aeration
----------------	--

Water Requirements

Cold Soft	3/4" from Water Softener @ 50 psi 10 GPM (IQ Soft Touch) or 25 GPM (IQ Touch Free)
Hot Soft	3/4" (3 GPM) from water heater
Spot Free	1-1/2" (10 GPM) from RO Storage Tank
RO Reject or Reclaim	3/4" (8 GPM) from Storage Tank

Call today for more information! 800.844.3442



D&S Car Wash Equipment Company
4200 Brandi Lane | High Ridge, MO 63049
dscarwash.com | sales@dscarwash.com
P: 636.677.3442 | F: 636.677.4105 | TF: 800.844.3442

© 2015 D&S Car Wash
1/2015