

Smarter.

Cleaner.



Greener.

The Versatile and Compact
IQ Self-Wash



Smarter. Cleaner. Greener.



The smarter self-serve

Its compact design eliminates storage and mixing tanks

Now there's a smarter self-serve car wash solution! The Smarter, Cleaner, Greener design of the **IQ Self-Wash** system by D&S is the most efficient and ecological solution for your self-serve car wash. With this revolutionary system, you can offer precise cleaning in your bays, increase customer satisfaction and value, and maximize space in your equipment room or location with its smaller footprint!

The IQ Self-Wash is a 1 thru 6 bay self-service pumping system designed for self-service car washes. The IQ Self-Wash is extremely versatile, providing all car wash functions from the same small, compact pumping system.

VFDs and direct driven motors control the pump speed used for each wash function, giving you complete control of water pressure and chemical consumption. Operating pressures are adjustable between 0 and 1500 psi. Chemicals are directly injected into the system so the need for storage and mixing tanks is eliminated.

D&S will configure an IQ Self-Wash system for your specific application and requirements at your site. Equipment packages are available for both remodeling and new construction projects.

Features

- Stainless steel construction
- Stainless steel electrical panel
- 3 PH, 5 hp electric motors
- Variable frequency drive – VFDs control the motors to allow for precise pump pressure per wash function
- PLC & smart relays
- CAT 5CP2150W direct drive pumps run smoother and quieter; eliminate belts and pulleys
- Multi pressure delivery 0-1500 psi SmartPurge™ between high and low pressure services
- Tankless – no need for storage tanks
- Injectors for chemical distribution provide precise control of chemical delivery and optimal consumption
- Pre-plumbed and pre-wired for fast, efficient installation and maintenance
- Air valves for foaming applications
- Regulators & gauges
- Low pressure tubing
- Freeze protection
- Plumbed for manual weep
- Weep Miser compatible
- Simple design, installation, maintenance

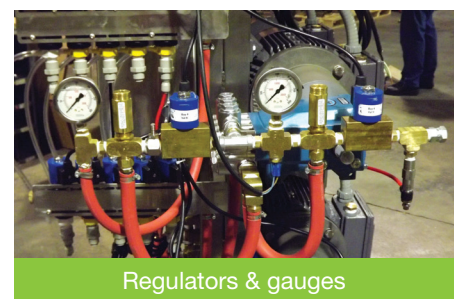


Standard Services

- Pre-Soak
- Tire Clean
- Engine Clean
- High Pressure Soap
- Foam Brush
- High Pressure Rinse
- High Pressure Wax
- Spot-Free Rinse Repressurization

Optional Services

- Triple Color Foam
- Tire Scrub
- Bug Remover



Regulators & gauges

vice solution.

Stainless steel
construction and
electrical panel

Variable frequency
drive controls
motors for precise
pump pressure per
wash function

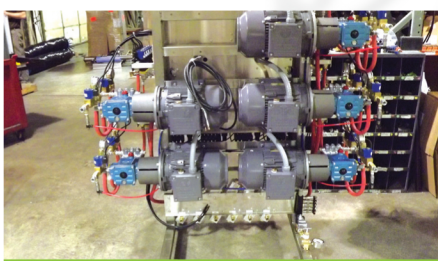
PLC & smart relays

Regulators, gauges,
and low
pressure tubing

Direct drive pumps
run smoother and
quieter; eliminate
belts and pulleys

Injectors provide
precise control of
chemical delivery

Pre-plumbed and
pre-wired for fast,
efficient installation
and maintenance



CAT 5CP2150W direct drive pumps

Call D&S at 800.844.3442 for more information!



Specifications

Bay Packages - Per Bay

- SS 360-degree bypass booms
- Trigger gun, wand & spray tip
- Flexible wand holder
- 3/8" X 12' high-pressure hose
- Foam brush, wand & holder
- 1/4" x 12' foam brush hose
- Manifolds for bay plumbing

Bay Meters - Per Bay

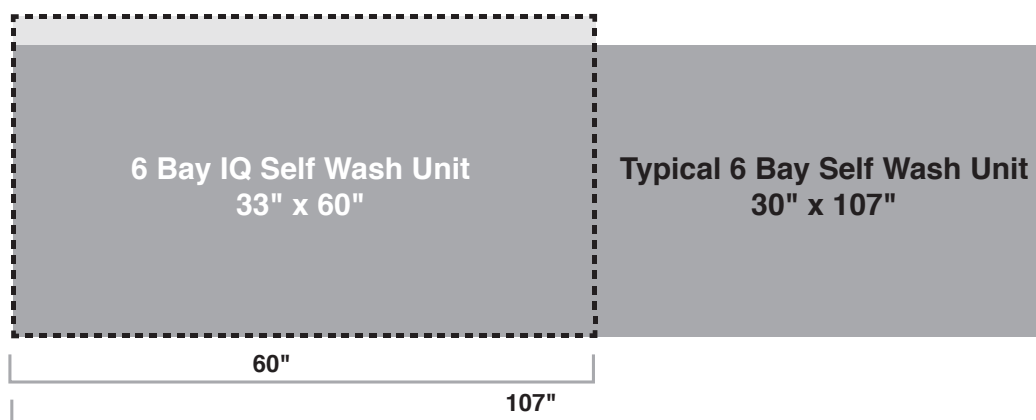
High-security bay meters offer versatile collection capacity, advanced activation, high performance, and simplistic customer bay control.

Specifications

120 VAC	1 Phase, 50/60 Hz	3HP motors: 19 amps/bay
208-230 VAC	3 Phase, 50/60 Hz	5HP motors: 16 amps/bay
380-415 VAC	3 Phase, 50 Hz	5HP motors: 8 amps/bay

Dimensions

1 & 2 Bay	40"h x 20"w x 33"d
3 & 4 Bay	40"h x 40"w x 33"d
5 & 6 Bay	40"h x 60"w x 33"d



Call today for more information! 800.844.3442



D&S Car Wash Equipment Company
4200 Brandi Lane | High Ridge, MO 63049
dscarwash.com | sales@dscarwash.com
P: 636.677.3442 | F: 636.677.4105 | TF: 800.844.3442

© 2015 D&S Car Wash
4/2015